

Prince of Songkla University
The Faculty of Engineering

Midterm Examination Semester I

Academic Year: 2007

Date: Aug 3, 07

Time: 13:30 -16:30

Subject: 225-602 Human Factors Engineering

Room: A203

ทูลิตในการสอบ โทษันต่ำคือ ปรบัตกในรายวิชานั้น และพัทการเรียน **1** ภาคการศึกษา

DIRECTIONS

1. Only short note on an A4 piece (both sides), dictionary and calculator are allowed.
2. 6 questions are given on 9 pages and must be done.
3. Total score is 100.
4. Your answers could be in English or Thai.
5. Please check all questions before start working.

Good Luck

Asst.Prof. Angoon Sungkhapong

1. How do you realize that Ergonomics could improve work efficiency in production process? Explain and show a good case. (10 points)

2. Sketch the skeletal system of human being and show me the position of :-

2.1 Humerus

2.2 Radius

2.3 Tibia

2.4 Femur

2.5 Lumbar 5/ Sacrum 1- joint

(15 points)

2.6 What kind of joints represent in figure 1 (A-E)? (6 points)

2.7 Give me the name of bones A1-A2 and D-1 in figure 1,

and the name of muscles 2-A and 2-B in figure 2. (4 points)

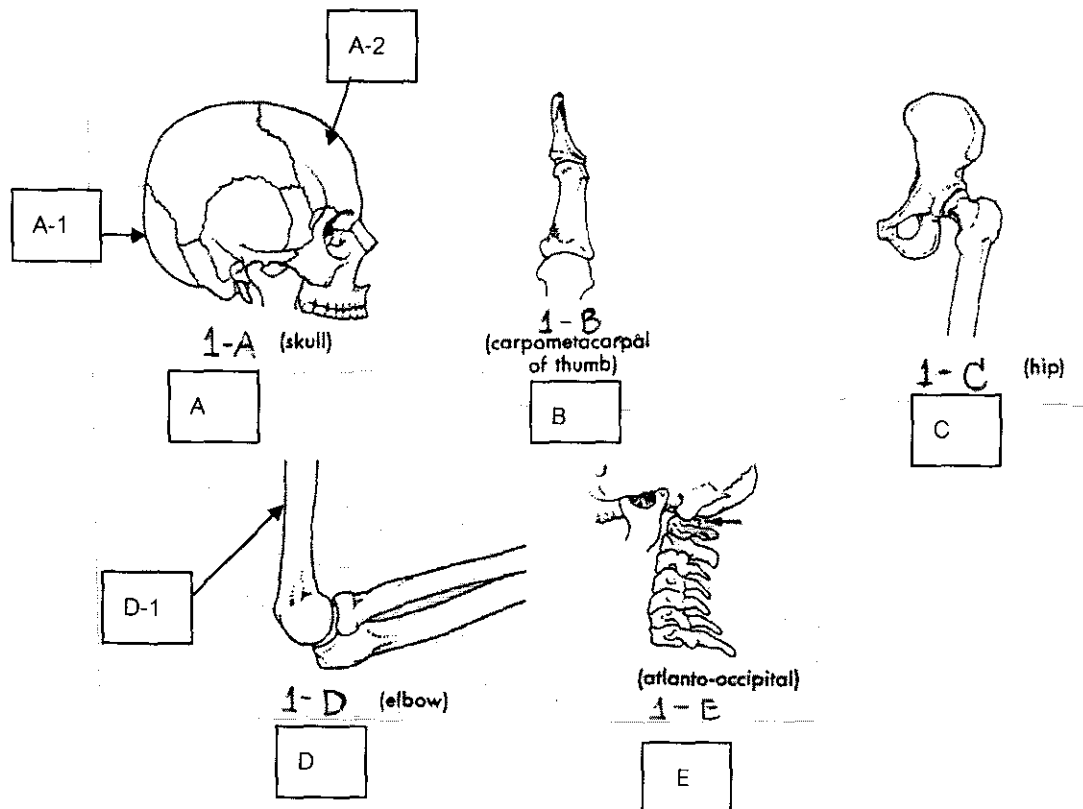


Figure 1: Show human bones and joints.

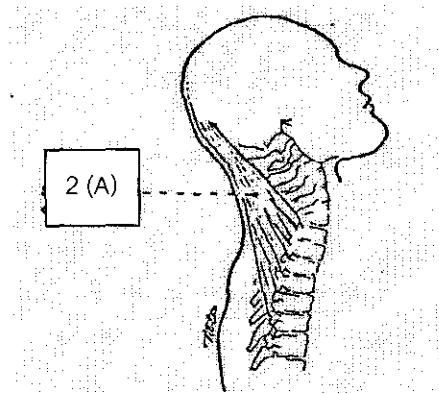


Figure 2-a

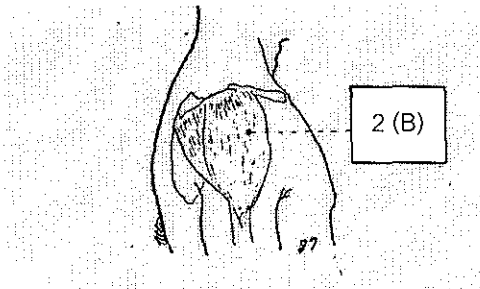


Figure 2-b

Figure 2 (a-b): Show the human muscles.

3. Anthropometry is a widely applied scientific discipline. It is used both in measuring the bones of early people and in assessing the body sizes and proportions of contemporaries. A set of anthropometry data and areas under the normal curve are shown in Table 1 and 2, respectively.

3.1 According to the anthropometric data shown in Table 1, determine the 99th percentile of eye height (men and women). (10 points)

3.2 How to apply anthropometric data for improving work efficiency?
(5 points)

4. There are two kinds of muscular effort. Describe them and show me the good examples of each muscular effort. (10 points)

5. According to the figure 3, explain the relationships between each kind of pulse and how is it useful for work design? (10 points)

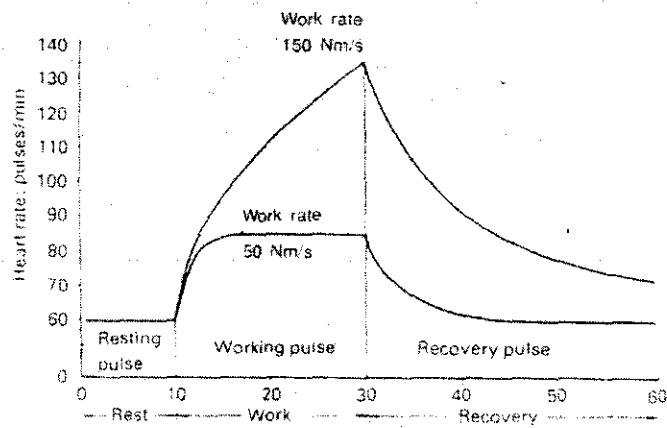


Figure 3: The relationship of heart rate and working period.

6. In the job illustrated in figure 4, products (W x L x H: 5x10x5 Inches) weigh 25 lb. arrive via a conveyor at a rate of 2-per minute. A worker picks up the product and places it in the cardboard box and then slides the packaged box to a conveyor behind table B. Assume that significant control of the object is required at the destination, and the worker twists to pick up the product; also assume that the coupling type is classified as "fair". The job is performed for a normal 8-hour shift, including regular rest allowance breaks.

6.1 Could this task cause the workers to have health problems? Analyze and show detailed explanation. (10 points)

6.2 According to (6.1), should you make any changes to this task to lower the health risks? Explain/sketch the changes you would make, and explain why you want to make those changes. Show your analysis to support your answer. (20 points)

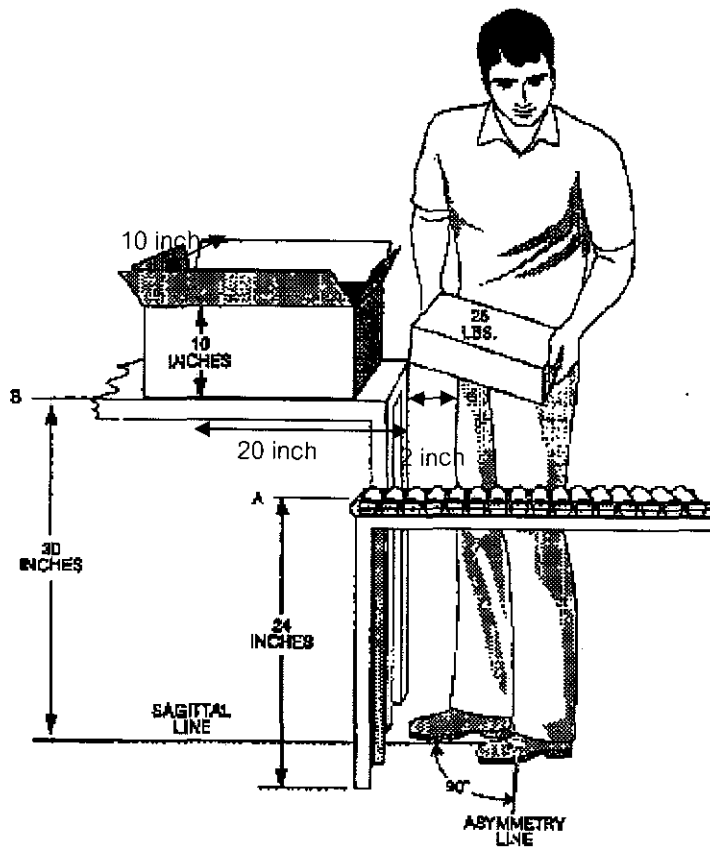


Figure 4: Workstation for question # 6.

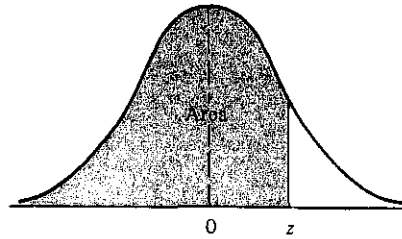
Note: State your assumptions (if any)

Table 1: Show a set of anthropometric data (in mm.)

Dimension	Men				Women			
	5th percentile	50th percentile	95th percentile	SD	5th percentile	50th percentile	95th percentile	SD
1 Stature	1647	1755	1867	67	1528	1628	1737	64
2 Eye height	1528	1633	1743	66	1415	1515	1621	63
3 Shoulder height (acromion)	1342	1442	1546	62	1241	1332	1432	58
4 Elbow height	995	1072	1153	48	926	997	1074	45
5 Hip height (trochanter)	853	927	1009	48	789	860	938	45
6 Knuckle height	na	na	na	na	na	na	na	na
7 Fingertip height	591	653	716	40	531	610	670	36
8 Sitting height	855	914	972	36	795	851	910	35
9 Sitting eye height	735	792	848	34	685	738	794	33
10 Sitting shoulder height (acromion)	549	598	646	30	509	555	604	29
11 Sitting elbow height	184	232	274	27	176	221	264	27
12 Thigh height (thickness)	149	168	190	13	140	158	180	12
13 Buttock-knee length	569	615	667	30	542	588	640	30
14 Buttock-popliteal length	458	500	546	27	440	481	528	27
15 Knee height	514	558	606	28	474	514	560	26

na = not available

Table 2:
Areas Under the Normal Curve



z	0.00	0.01	0.02	0.03	0.04	0.05	0.06	0.07	0.08	0.09
-3.4	0.0003	0.0003	0.0003	0.0003	0.0003	0.0003	0.0003	0.0003	0.0003	0.0002
-3.3	0.0005	0.0005	0.0005	0.0004	0.0004	0.0004	0.0004	0.0004	0.0004	0.0003
-3.2	0.0007	0.0007	0.0006	0.0006	0.0006	0.0006	0.0006	0.0005	0.0005	0.0005
-3.1	0.0010	0.0009	0.0009	0.0009	0.0008	0.0008	0.0008	0.0008	0.0007	0.0007
-3.0	0.0013	0.0013	0.0013	0.0012	0.0012	0.0011	0.0011	0.0011	0.0010	0.0010
-2.9	0.0019	0.0018	0.0017	0.0017	0.0016	0.0016	0.0015	0.0015	0.0014	0.0014
-2.8	0.0026	0.0025	0.0024	0.0023	0.0023	0.0022	0.0021	0.0021	0.0020	0.0019
-2.7	0.0035	0.0034	0.0033	0.0032	0.0031	0.0030	0.0029	0.0028	0.0027	0.0026
-2.6	0.0047	0.0045	0.0044	0.0043	0.0041	0.0040	0.0039	0.0038	0.0037	0.0036
-2.5	0.0062	0.0060	0.0059	0.0057	0.0055	0.0054	0.0052	0.0051	0.0049	0.0048
-2.4	0.0082	0.0080	0.0078	0.0075	0.0073	0.0071	0.0069	0.0068	0.0066	0.0064
-2.3	0.0107	0.0104	0.0102	0.0099	0.0096	0.0094	0.0091	0.0089	0.0087	0.0084
-2.2	0.0139	0.0136	0.0132	0.0129	0.0125	0.0122	0.0119	0.0116	0.0113	0.0110
-2.1	0.0179	0.0174	0.0170	0.0166	0.0162	0.0158	0.0154	0.0150	0.0146	0.0143
-2.0	0.0228	0.0222	0.0217	0.0212	0.0207	0.0202	0.0197	0.0192	0.0188	0.0183
-1.9	0.0287	0.0281	0.0274	0.0268	0.0262	0.0256	0.0250	0.0244	0.0239	0.0233
-1.8	0.0359	0.0352	0.0344	0.0336	0.0329	0.0322	0.0314	0.0307	0.0301	0.0294
-1.7	0.0446	0.0436	0.0427	0.0418	0.0409	0.0401	0.0392	0.0384	0.0375	0.0367
-1.6	0.0548	0.0537	0.0526	0.0516	0.0505	0.0495	0.0485	0.0475	0.0465	0.0455
-1.5	0.0668	0.0655	0.0643	0.0630	0.0618	0.0606	0.0594	0.0582	0.0571	0.0559
-1.4	0.0808	0.0793	0.0778	0.0764	0.0749	0.0735	0.0722	0.0708	0.0694	0.0681
-1.3	0.0968	0.0951	0.0934	0.0918	0.0901	0.0885	0.0869	0.0853	0.0838	0.0823
-1.2	0.1151	0.1131	0.1112	0.1093	0.1075	0.1056	0.1038	0.1020	0.1003	0.0985
-1.1	0.1357	0.1335	0.1314	0.1292	0.1271	0.1251	0.1230	0.1210	0.1190	0.1170
-1.0	0.1587	0.1562	0.1539	0.1515	0.1492	0.1469	0.1446	0.1423	0.1401	0.1379
-0.9	0.1841	0.1814	0.1788	0.1762	0.1736	0.1711	0.1685	0.1660	0.1635	0.1611
-0.8	0.2119	0.2090	0.2061	0.2033	0.2005	0.1977	0.1949	0.1922	0.1894	0.1867
-0.7	0.2420	0.2389	0.2358	0.2327	0.2296	0.2266	0.2236	0.2206	0.2177	0.2148
-0.6	0.2743	0.2709	0.2676	0.2643	0.2611	0.2578	0.2546	0.2514	0.2483	0.2451
-0.5	0.3085	0.3050	0.3015	0.2981	0.2946	0.2912	0.2877	0.2843	0.2810	0.2776
-0.4	0.3446	0.3409	0.3372	0.3336	0.3300	0.3264	0.3228	0.3192	0.3156	0.3121
-0.3	0.3821	0.3783	0.3745	0.3707	0.3669	0.3632	0.3594	0.3557	0.3520	0.3483
-0.2	0.4207	0.4168	0.4129	0.4090	0.4052	0.4013	0.3974	0.3936	0.3897	0.3859
-0.1	0.4602	0.4562	0.4522	0.4483	0.4443	0.4404	0.4364	0.4325	0.4286	0.4247
-0.0	0.5000	0.4960	0.4920	0.4880	0.4840	0.4801	0.4761	0.4721	0.4681	0.4641
0.0	0.5000	0.5040	0.5080	0.5120	0.5160	0.5199	0.5239	0.5279	0.5319	0.5359
0.1	0.5398	0.5438	0.5478	0.5517	0.5557	0.5596	0.5636	0.5675	0.5714	0.5753
0.2	0.5793	0.5832	0.5871	0.5910	0.5948	0.5987	0.6026	0.6064	0.6103	0.6141
0.3	0.6179	0.6217	0.6255	0.6293	0.6331	0.6368	0.6406	0.6443	0.6480	0.6517
0.4	0.6554	0.6591	0.6628	0.6664	0.6700	0.6736	0.6772	0.6808	0.6844	0.6879
0.5	0.6915	0.6950	0.6985	0.7019	0.7054	0.7088	0.7123	0.7157	0.7190	0.7224
0.6	0.7257	0.7291	0.7324	0.7357	0.7389	0.7422	0.7454	0.7486	0.7517	0.7549
0.7	0.7580	0.7611	0.7642	0.7673	0.7704	0.7734	0.7764	0.7794	0.7823	0.7852
0.8	0.7881	0.7910	0.7939	0.7967	0.7995	0.8023	0.8051	0.8078	0.8106	0.8133
0.9	0.8159	0.8186	0.8212	0.8238	0.8264	0.8289	0.8315	0.8340	0.8365	0.8389
1.0	0.8413	0.8438	0.8461	0.8485	0.8508	0.8531	0.8554	0.8577	0.8599	0.8621
1.1	0.8643	0.8665	0.8686	0.8708	0.8729	0.8749	0.8770	0.8790	0.8810	0.8830
1.2	0.8849	0.8869	0.8888	0.8907	0.8925	0.8944	0.8962	0.8980	0.8997	0.9015
1.3	0.9032	0.9049	0.9066	0.9082	0.9099	0.9115	0.9131	0.9147	0.9162	0.9177
1.4	0.9192	0.9207	0.9222	0.9236	0.9251	0.9265	0.9278	0.9292	0.9306	0.9319
1.5	0.9332	0.9345	0.9357	0.9370	0.9382	0.9394	0.9406	0.9418	0.9429	0.9441
1.6	0.9452	0.9463	0.9474	0.9484	0.9495	0.9505	0.9515	0.9525	0.9535	0.9545
1.7	0.9554	0.9564	0.9573	0.9582	0.9591	0.9599	0.9608	0.9616	0.9625	0.9633
1.8	0.9641	0.9649	0.9656	0.9664	0.9671	0.9678	0.9686	0.9693	0.9699	0.9706
1.9	0.9713	0.9719	0.9726	0.9732	0.9738	0.9744	0.9750	0.9756	0.9761	0.9767
2.0	0.9772	0.9778	0.9783	0.9788	0.9793	0.9798	0.9803	0.9808	0.9812	0.9817
2.1	0.9821	0.9826	0.9830	0.9834	0.9838	0.9842	0.9846	0.9850	0.9854	0.9857
2.2	0.9861	0.9864	0.9868	0.9871	0.9875	0.9878	0.9881	0.9884	0.9887	0.9890
2.3	0.9893	0.9896	0.9898	0.9901	0.9904	0.9906	0.9909	0.9911	0.9913	0.9916
2.4	0.9918	0.9920	0.9922	0.9925	0.9927	0.9929	0.9931	0.9932	0.9934	0.9936
2.5	0.9938	0.9940	0.9941	0.9943	0.9945	0.9946	0.9948	0.9949	0.9951	0.9952
2.6	0.9953	0.9955	0.9956	0.9957	0.9959	0.9960	0.9961	0.9962	0.9963	0.9964
2.7	0.9965	0.9966	0.9967	0.9968	0.9969	0.9970	0.9971	0.9972	0.9973	0.9974
2.8	0.9974	0.9975	0.9976	0.9977	0.9977	0.9978	0.9979	0.9979	0.9980	0.9981
2.9	0.9981	0.9982	0.9982	0.9983	0.9984	0.9984	0.9985	0.9985	0.9986	0.9986
3.0	0.9987	0.9987	0.9987	0.9988	0.9988	0.9989	0.9989	0.9989	0.9990	0.9990
3.1	0.9990	0.9991	0.9991	0.9991	0.9992	0.9992	0.9992	0.9992	0.9993	0.9993
3.2	0.9993	0.9993	0.9994	0.9994	0.9994	0.9994	0.9994	0.9995	0.9995	0.9995
3.3	0.9995	0.9995	0.9995	0.9996	0.9996	0.9996	0.9996	0.9996	0.9996	0.9997
3.4	0.9997	0.9997	0.9997	0.9997	0.9997	0.9997	0.9997	0.9997	0.9997	0.9998

Table 3: Horizontal Multiplier

H	HM	H	HM
---	----	---	----
in		cm	
--		--	
<= 10	1.00	<=25	1.00
11	.91	28	.89
12	.83	30	.83
13	.77	32	.78
14	.71	34	.74
15	.67	36	.69
16	.63	38	.66
17	.59	40	.63
18	.56	42	.60
19	.53	44	.57
20	.50	46	.54
21	.48	48	.52
22	.46	50	.50
23	.44	52	.48
24	.42	54	.46
25	.40	56	.45
>25	.00	58	.43
		60	.42
		63	.40
		>63	.00

Table 4: Vertical Multiplier

V	VM	V	VM
---	----	---	----
in		cm	
--		--	
0	.78	0	.78
5	.81	10	.81
10	.85	20	.84
15	.89	30	.87
20	.93	40	.90
25	.96	50	.93
30	1.00	60	.96
35	.96	70	.99
40	.93	80	.99
45	.89	90	.96
50	.85	100	.93
55	.81	110	.90
60	.78	120	.87
65	.74	130	.84
70	.70	140	.81
>70	.00	150	.78
		160	.75
		170	.72
		175	.70
		>175	.00

Table 5: Distance Multiplier

D	DM	D	DM
---	----	---	----
in		cm	
--		--	
<=10	1.00	<=25	1.00
15	.94	40	.93
20	.91	55	.90
25	.89	70	.88
30	.88	85	.87
35	.87	100	.87
40	.87	115	.86
45	.86	130	.86
50	.86	145	.85
55	.85	160	.85
60	.85	175	.85
70	.85	>175	.00
>70	.00		

Table 6: Asymmetric Multiplier

A	AM
---	----
deg	

0	1.00
15	.95
30	.90
45	.86
60	.81
75	.76
90	.71
105	.66
120	.62
135	.57
>135	.00

Table 7: Coupling Multiplier

Coupling Multiplier		

Coupling Type	V< 30 inch (75 cm)	V>= 30 inch (75 cm)
-----	-----	-----
Good	1.00	1.00
Fair	0.95	1.00
Poor	0.90	0.90

Table 8: Frequency Multiplier Table (FM)

Frequency Lifts/min (F):	Work Duration					
	<= 1 Hour		>1 but <=2 Hours		>2 but <=8 Hours	
	V<30+	V>=30	V<30	V>=30	V<30	V>=30
<=0.2	1.00	1.00	.95	.95	.85	.85
0.5	.97	.97	.92	.92	.81	.81
1	.94	.94	.88	.88	.75	.75
2	.91	.91	.84	.84	.65	.65
3	.88	.88	.79	.79	.55	.55
4	.84	.84	.72	.72	.45	.45
5	.80	.80	.60	.60	.35	.35
6	.75	.75	.50	.50	.27	.27
7	.70	.70	.42	.42	.22	.22
8	.60	.60	.35	.35	.18	.18
9	.52	.52	.30	.30	.00	.15
10	.45	.45	.26	.26	.00	.13
11	.41	.41	.00	.23	.00	.00
12	.37	.37	.00	.21	.00	.00
13	.00	.34	.00	.00	.00	.00
14	.00	.31	.00	.00	.00	.00
15	.00	.28	.00	.00	.00	.00
>15	.00	.00	.00	.00	.00	.00

+ Values of V are in inches
 : For lifting less frequently than once per 5 minutes, set
 F = 0.2 lifts/minute.

