

PRINCE OF SONGKLA UNIVERSITY  
FACULTY OF ENGINEERING

Midterm Examination : Semester 2

Academic Year : 2007

Date : December 30, 2007

Time : 13:30-16:30

Subject : 226-439 Logistics & Material Handling System

Room : หัวหุ่น

ทูลจรดใการสอบ โทษซึนต่ำปรึบตกใรายวฤษานึน แลฬพักการเรเรียน 1 ภาคการศึกษา

**Directions :**

- Can take any books to the room.
- Show your solutions and methods on your exam papers.
- Don't ask any questions to the proctors.** If you think you don't understand any questions, you should make a decision by your own.
- There are **7** problems. You must do all of them.
- Can use any calculators.

Name.....Code.....

Question	Full Points	Taken Points
1	15	
2	10	
3	10	
4	20	
5	15	
6	20	
7	10	
<b>Total</b>	<b>100</b>	

Assoc. Prof. Wanida Rattanamanee

Lecturer



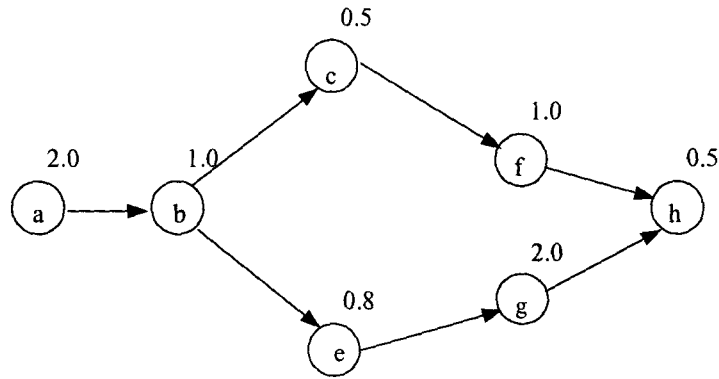
*Wanida*





Code.....

4. (20 points) A manager wants to assign tasks to workstations as efficiently as possible, and achieve an hourly output of 60 units. Assume the shop works a 60 minute per hour. There are 8 hours per day. Assign the tasks shown in the accompanying precedence diagram (times are in minutes) to workstations using "in order of most following tasks" rules.



- 4.1 What is the value of cycle time?
- 4.2 How many workstations should have in the system?
- 4.3 Identify the tasks you would assign to each station.
- 4.4 Determine the percentage of idle time.

.....

.....

.....

.....

.....

.....

.....

.....

.....

.....

.....

.....

.....

.....

.....

.....

.....

.....

.....

.....

.....

.....

one 4

.....

.....

.....

.....

.....

.....

.....

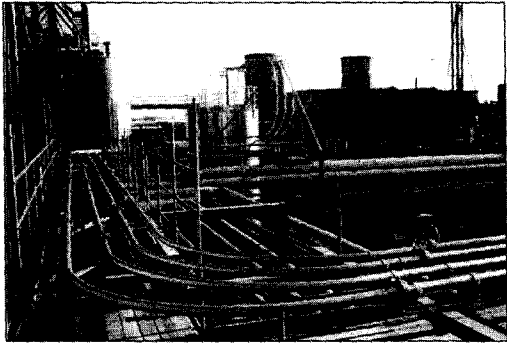
.....

.....

.....

5. (15 points) From these following equipment pictures, what do materials, environment and condition appropriate for the equipments?

5.1



.....

.....

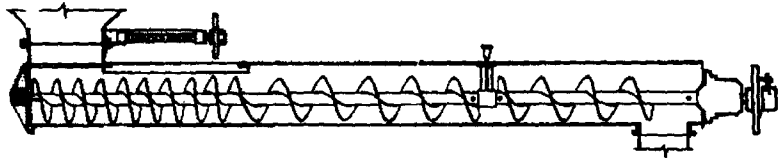
.....

.....

.....

.....

5.2



.....

.....

.....

.....

.....

onu

Code.....

5.3



.....  
.....  
.....  
.....  
.....

6. (20 points) Determine the placement of department (such as, department AA is located at Room 1, department BB is located at Room 2, etc.) for a newly designed facility that will minimize total transportation costs using the data in the following tables. Assume that reverse distances are the same. The locations are shown in the grid. Determine total distances of your layout.

Room 1	Room 2
Room 3	Room 4

Table 1 Distance between Rooms (feet)

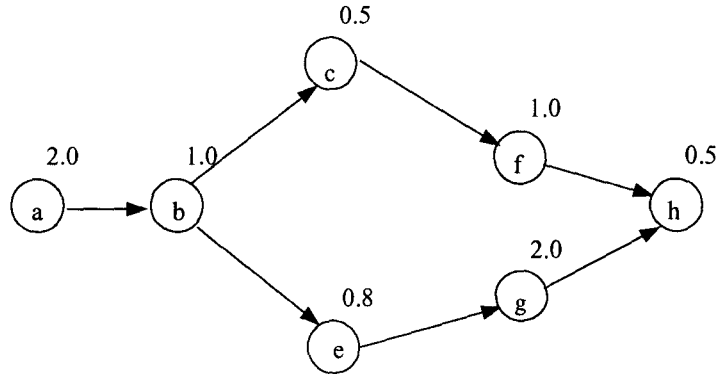
	To	1	2	3	4
From					
1		-	40	40	80
2		40	-	80	40
3		40	80	-	40
4		80	40	40	-

OM' a



Code.....

4. (20 points) A manager wants to assign tasks to workstations as efficiently as possible, and achieve an hourly output of 60 units. Assume the shop works a 60 minute per hour. There are 8 hours per day. Assign the tasks shown in the accompanying precedence diagram (times are in minutes) to workstations using "in order of most following tasks" rules.



- 4.1 What is the value of cycle time?
- 4.2 How many workstations should have in the system?
- 4.3 Identify the tasks you would assign to each station.
- 4.4 Determine the percentage of idle time.

.....

.....

.....

.....

.....

.....

.....

.....

.....

.....

.....

.....

.....

.....

.....

.....

.....

.....

.....

.....

.....

.....

one?



.....

.....

.....

.....

.....

.....

.....

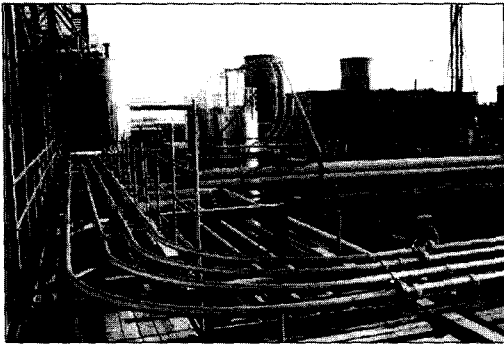
.....

.....

.....

5. (15 points) From these following equipment pictures, what do materials, environment and condition appropriate for the equipments?

5.1



.....

.....

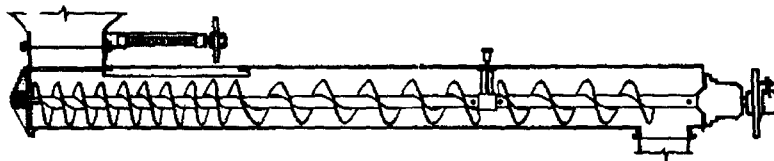
.....

.....

.....

.....

5.2



.....

.....

.....

.....

.....

onu

Code.....

5.3



.....

.....

.....

.....

.....

6. (20 points) Determine the placement of department (such as, department AA is located at Room 1, department BB is located at Room 2, etc.) for a newly designed facility that will minimize total transportation costs using the data in the following tables. Assume that reverse distances are the same. The locations are shown in the grid. Determine total distances of your layout.

Room 1	Room 2
Room 3	Room 4

Table 1 Distance between Rooms (feet)

	To	1	2	3	4
From					
1		-	40	40	80
2		40	-	80	40
3		40	80	-	40
4		80	40	40	-

*Handwritten signature or initials*



